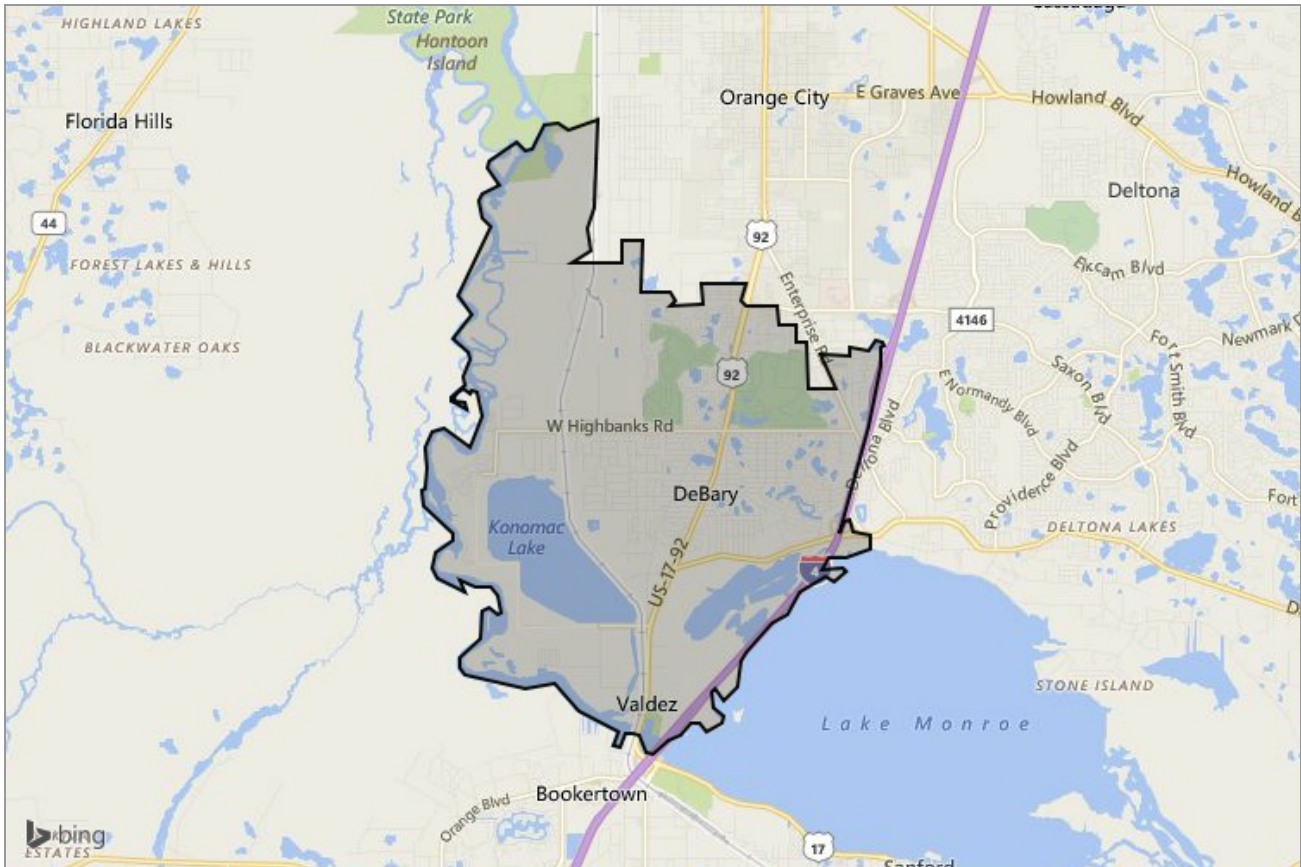


NEIGHBORHOOD REPORT

DeBary, FL 32713



Presented by

DAWN WATERS

Florida Real Estate License: BK3206453



Work: (386) 804-4444 | Mobile: (386) 804-4444

info@dawnwaters.com
<http://www.realestatesalesdebary.com>

MCBRIDE REALTY GROUP LLC
15 S Charles Richard Beall Blvd
DeBary, FL 32713

Neighborhood: Housing Stats and Charts

	32713	Volusia County	Florida	United States
Median Estimated Home Value	\$182K	\$145K	\$175K	\$319K
Estimated Home Value 12-Month Change	11.4%	9.7%	10%	–
Median List Price	\$215K	\$185K	\$225K	\$89K
List Price 1-Month Change	2.4%	0.7%	2.3%	7.2%
List Price 12-Month Change	8.7%	15.6%	13.4%	1.7%
Median Home Age	29	34	32	–
Own	85%	71%	66%	64%
Rent	15%	29%	34%	36%
\$ Value of All Buildings for which Permits Were Issued	–	\$159M	\$7.82B	\$102B
% Change in Permits for All Buildings	–	9%	13%	2%
% Change in \$ Value for All Buildings	–	–2%	15%	7%

Median Sales Price vs. Sales Volume

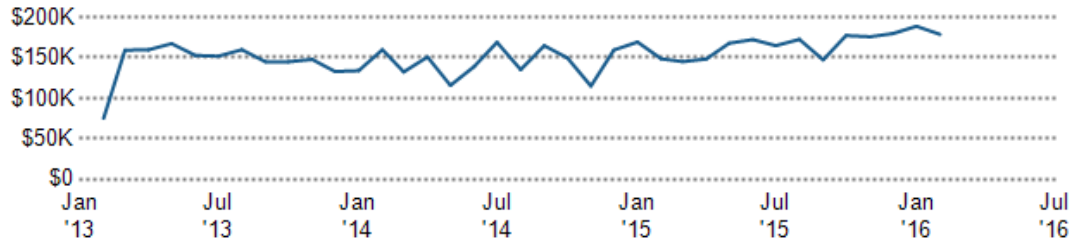
This chart compares the price trend and sales volume for homes in an area. Home prices typically follow sales volume, with a time lag, since sales activity is the driver behind price movements.

Data Source: Public records data

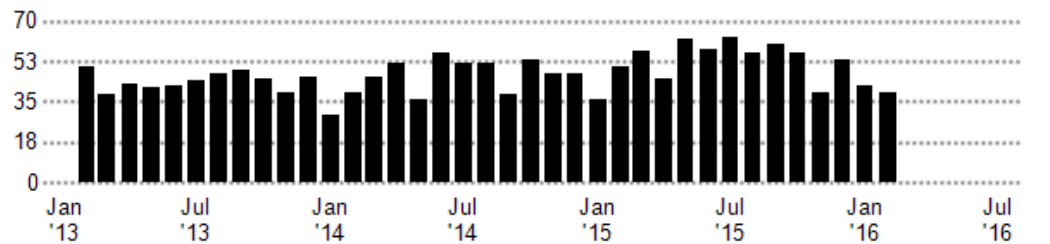
Update Frequency: Monthly

■ Median Sales Price
■ Sales Volume

Median Sales Price



Sales Volume



Median Listing Price vs. Listing Volume

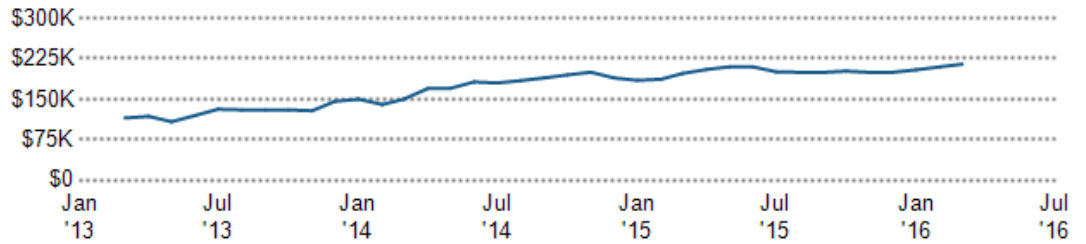
This chart compares the listing price and listing volume for homes in an area. Listing prices often follow listing volume, with a time lag, because supply can drive price movements.

Data Source: On- and off-market listings sources

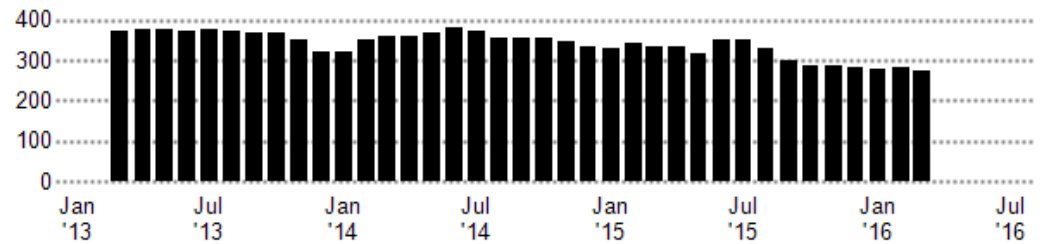
Update Frequency: Monthly

■ Median List Price
■ Listing Volume

Median List Price



Listing Volume



Price Range of Homes Sold

This chart shows the distribution of homes reported sold in the past six months within different price ranges in the area of your search. The amount shown for the subject property is sold data where available, or the property's estimated value when sales data are unavailable (such as a non-disclosure state) or provided in range format.

Data Source: Public records data

Update Frequency: Monthly

■ Sales Count By Price Range



Price per Square Foot of Homes Sold

This chart shows the distribution of homes reported sold in the past six months at different prices per square foot in the area of your search.

Data Source: Public records data

Update Frequency: Monthly

■ Sales Count By Price Per Sq Ft



Size of Homes Sold

This chart shows the distribution of homes reported sold in the past six months of different sizes in the area of your search.

Data Source: Public records data

Update Frequency: Monthly

■ Sales Count By Living Area



Age Range of Homes Sold

This chart shows the distribution of homes reported sold in the past six months of different age ranges in the area of your search.

Data Source: Public records data

Update Frequency: Monthly

■ Sales Count by Age of House



Number of Bedrooms in Homes Sold

This chart shows the distribution of homes reported sold in the past six months, according to the number of bedrooms, in the area of your search.

Data Source: Public records data

Update Frequency: Monthly

■ Sales Count by Bedroom



Neighborhood: People Stats and Charts

	32713	Volusia County	Florida	United States
Population	20.7K	499K	19.4M	314M
Population Density per Sq Mi	920	453	361	—
Population Change since 2000	28.3%	12.6%	21.1%	11.6%
Median Age	46	46	41	37
Male / Female Ratio	51%	49%	49%	49%
High School Graduate	33%	33%	30%	28%
2-Year Degree	34%	33%	30%	29%
Bachelor Degree	17%	14%	17%	18%
Post-graduate Degree	8%	8%	10%	11%

Population of Children by Age Group

This chart shows the distribution of the population of children by age range — from birth to 17 — in the area of your search.

Data Source: U.S. Census

Update Frequency: Annually

■ 32713



Population of Adults by Age Group

This chart shows the distribution of the population of adults by age range — from 18 to 75-plus — in the area of your search.

Data Source: U.S. Census

Update Frequency: Annually

■ 32713



Households With Children

This chart shows the distribution of households with children, categorized by marital status, in the area of your search.

Data Source: U.S. Census

Update Frequency: Annually

■ 32713



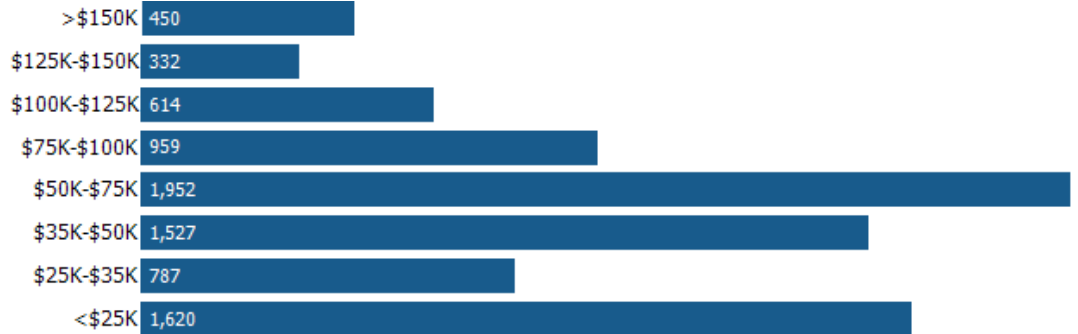
Household Income Brackets

This chart shows annual household income levels within an area.

Data Source: U.S. Census

Update Frequency: Annually

■ 32713



Presidential Voting Pattern

This chart shows how residents of a county voted in the 2014 presidential election.

Data Source: USElectionAtlas.org

Update Frequency: Annually



Neighborhood: Economic Stats and Charts

	32713	Volusia County	Florida	United States
Income Per Capita	\$26,573	\$23,844	\$26,499	\$28,555
Median Household Income	\$52,389	\$41,714	\$47,212	\$53,482
Unemployment Rate	–	5.4%	5.1%	4.9%
Unemployment Number	–	12.9K	493K	7.79M
Employment Number	–	227K	9.22M	151M
Labor Force Number	–	240K	9.71M	158M

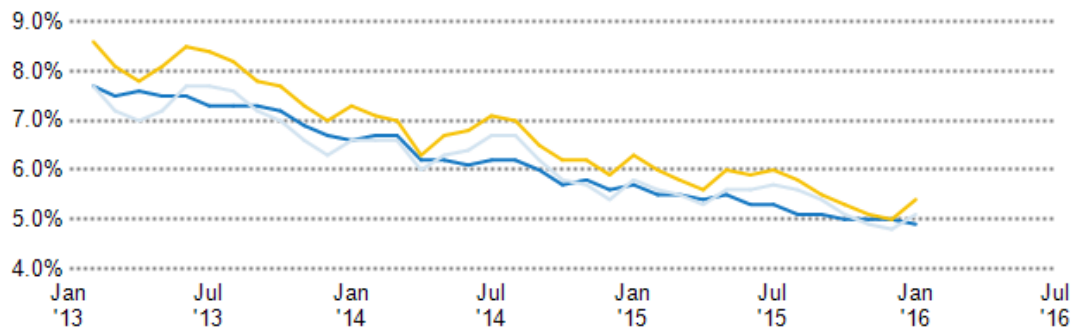
Unemployment Rate

This chart shows the unemployment trend in the area of your search. The unemployment rate is an important driver behind the housing market.

Data Source: Bureau of Labor Statistics

Update Frequency: Monthly

- Volusia County
- Florida
- United States



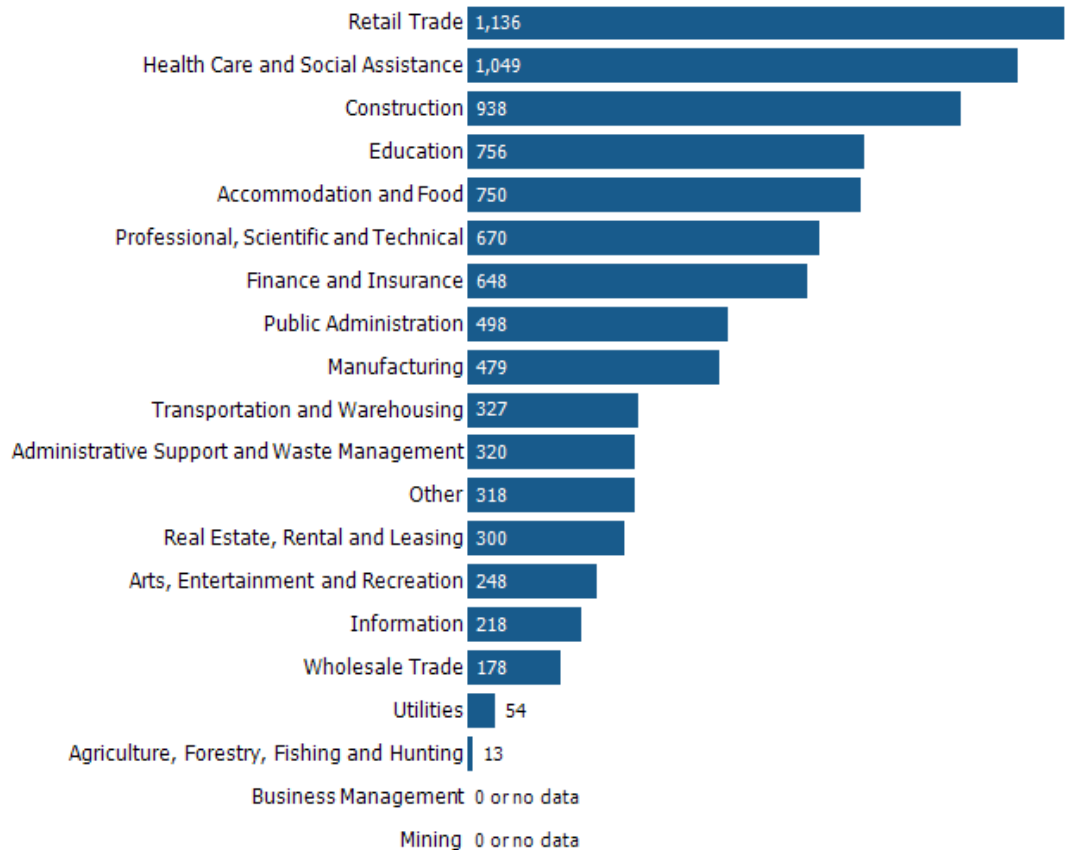
Occupational Categories

This chart shows categories of employment within an area.

Data Source: U.S. Census

Update Frequency: Annually

■ 32713



Neighborhood: Quality of Life Stats and Charts

Quality of Life in 32713

	32713	Volusia County	Florida	United States
Elevation (in feet)	36	26	–	–
Annual Rainfall (in inches)	59.99	56.45	56.46	–
Annual Snowfall (in inches)	0	0	0.06	–
Days of Full Sun (per year)	98	98	98	–
Travel Time to Work (in minutes)	29	25	26	26
Water Quality - Health Violations	–	2.77	–	–
Water Quality - Monitoring and Report Violations	–	0	–	–
Superfund Sites	0	2	85	2,302
Brownfield Sites	No	Yes	Yes	Yes

Average Commute Time

This chart shows average commute times to work, in minutes, by percentage of an area's population.

Data Source: U.S. Census

Update Frequency: Annually



■ 32713

How People Get to Work

This chart shows the types of transportation that residents of the area you searched use for their commute.

Data Source: U.S. Census

Update Frequency: Annually



Average Monthly Temperature

This chart shows average temperatures in the area you searched.

Data Source: NOAA

Update Frequency: Annually



Walkability Scores (out of 5)

This neighborhood or ZIP code is rated for walking access to general points of interest, reflected in the overall score, plus amenities (such as retail stores) and leisure (such as restaurants and parks). Other factors considered in the scores are street types, weather, public transportation and population density.

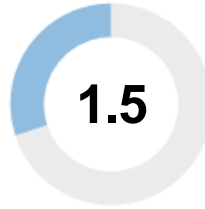
Data Source: Maponics

Update Frequency: Quarterly

Overall Score



Amenity Score



Leisure Score

